

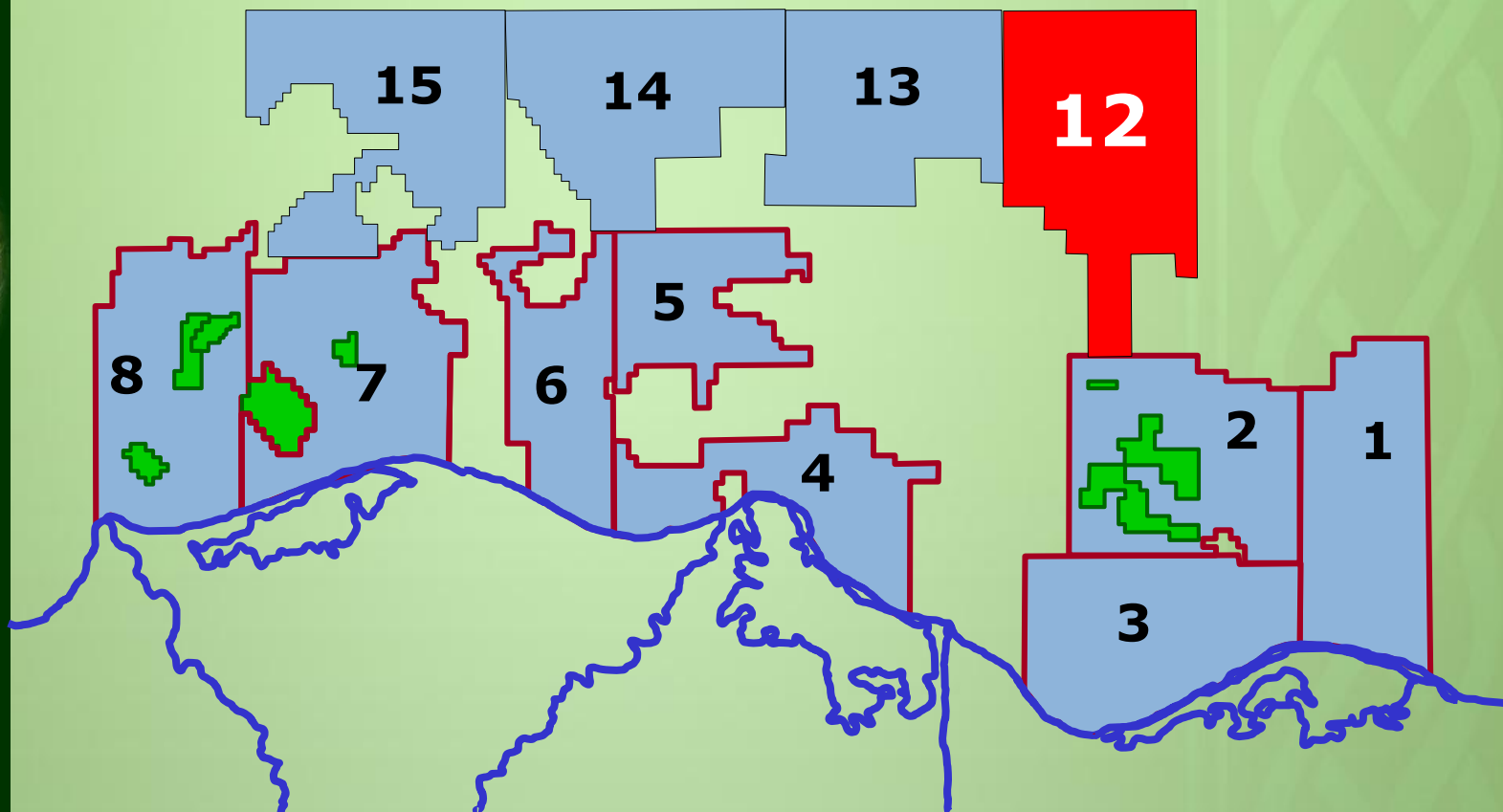


Ministry of Petroleum
and Mineral Resources



Block 12

North East Hapy Offshore



BID 2015



Block Summary

Location:

Block 12 is located offshore Mediterranean Sea, in water depths ranging between 100 m and 1100 m. It is situated at approximately 120 km to the NNE of Port Said City. The southern boundary of the block lies some 82 km to the north of the Mediterranean shoreline with its northern boundary extending northward for additional 77 km. The block is situated in an area with well-established infrastructure for gas-condensate production/transportation.

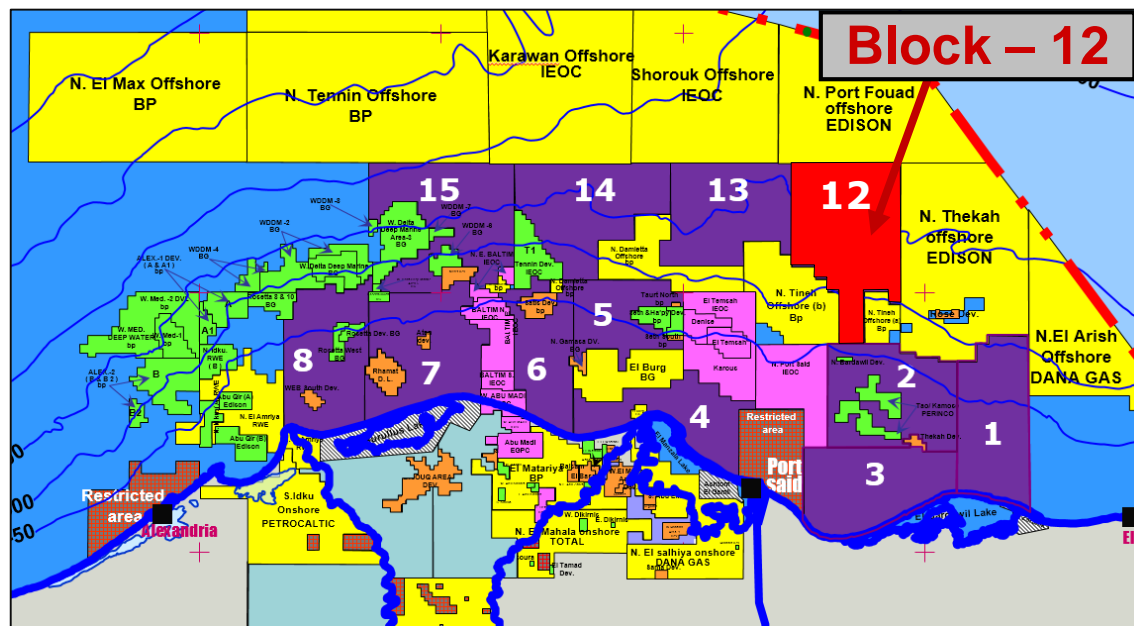
Total Area: 2458 Km²

Water Depth: 100 – 1100 m

Previous Concessionaire: GSPC & bp

Nearby Fields & Discoveries:

North East Hapy Offshore Block is located at considerable distances to the north and northeast of North Port Fouad and El Temsah gas-condensate fields respectively.

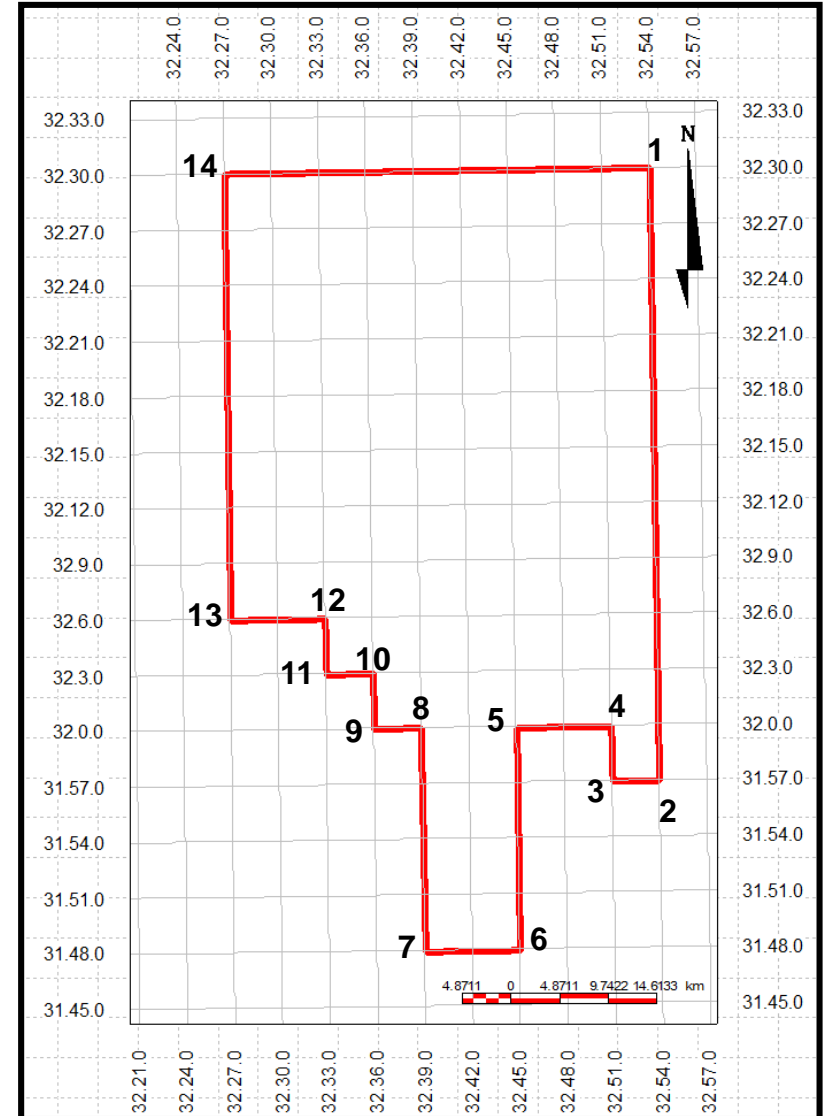


Block (12)

North East Hapy Offshore

Total area ~ 2458 km²

No.	Lat.	Long.
1	32° 30' 00"	32° 54' 00"
2	31° 57' 00"	32° 54' 00"
3	31° 57' 00"	32° 51' 00"
4	32° 00' 00"	32° 51' 00"
5	32° 00' 00"	32° 45' 00"
6	31° 48' 00"	32° 45' 00"
7	31° 48' 00"	32° 39' 00"
8	32° 00' 00"	32° 39' 00"
9	32° 00' 00"	32° 36' 00"
10	3°2 03' 00"	32° 36' 00"
11	32° 03' 00"	32° 33' 00"
12	32° 06' 00"	32° 33' 00"
13	32° 06' 00"	32° 27' 00"
14	32° 30' 00"	32° 27' 00"





EGAS

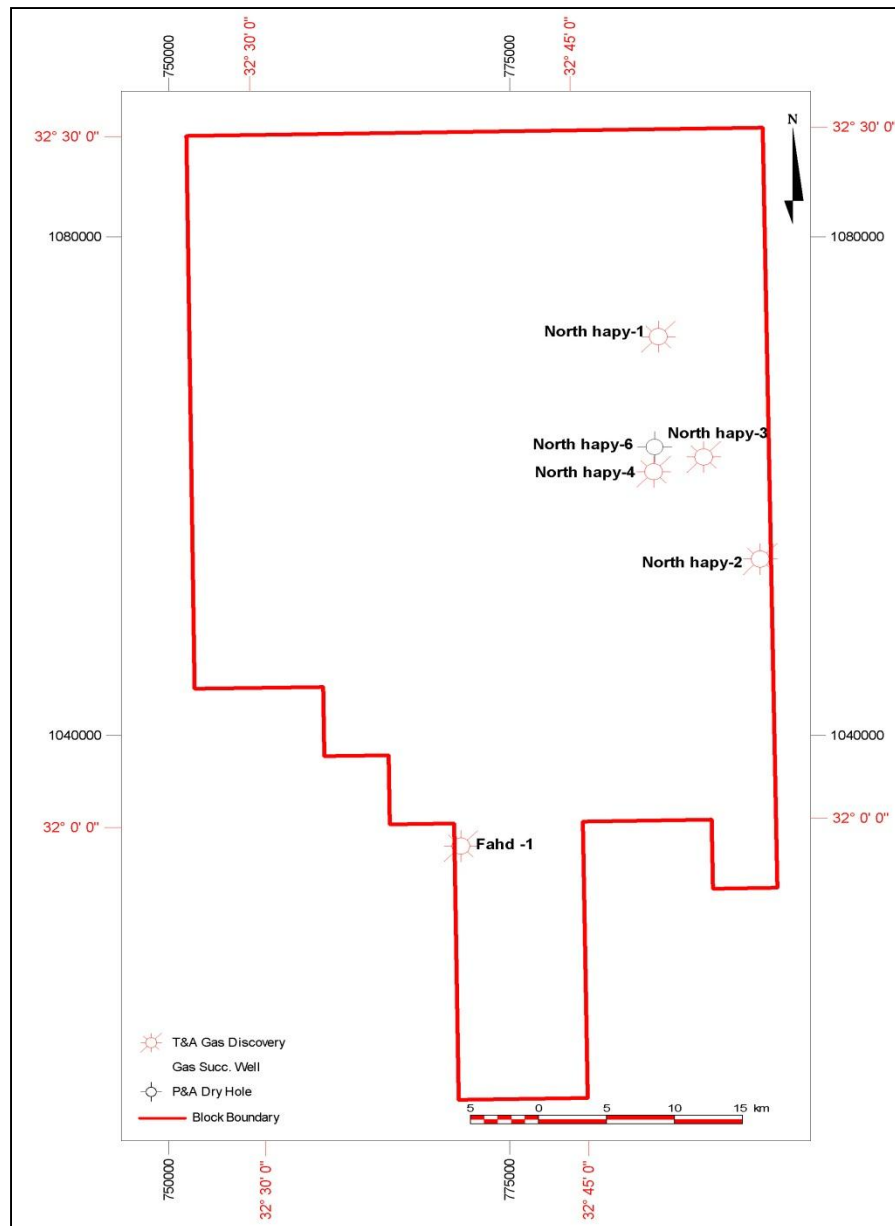


Ministry of Petroleum and Mineral Resources

Drilled/Selected Wells

Block 12: NE Hapy Offshore

Well Name/ Company	Spud Date/ Compl. Date	TD/ FM. @ TD	Lat./ Long	Status
Fahd -1 IEOC	21-Aug-2002 14-Sep-2002	2216 M K. El Sheikh (Pliocene)	31 59 00.900 32 39 18.823	T&A Gas Discovery
North hapy-1 GSPC	20-Dec-2011 5-Mar-2012	2500 M K. El Sheikh (Pliocene)	32 20 59.788 32 48 56.425	T&A Gas Discovery
North hapy-2 GSPC	8-Mar-2012 4-Jun-2012	1925 M K. El Sheikh (Pliocene)	32 11 16.45 32 53 30.13	Gas Succ.Well
North hapy-4 GSPC	8-Jun-2012 10-Jul-2012	1807 M K. El Sheikh (Pliocene)	32 15 8.14 32 48 36.13	T&A Gas Discovery





EGAS



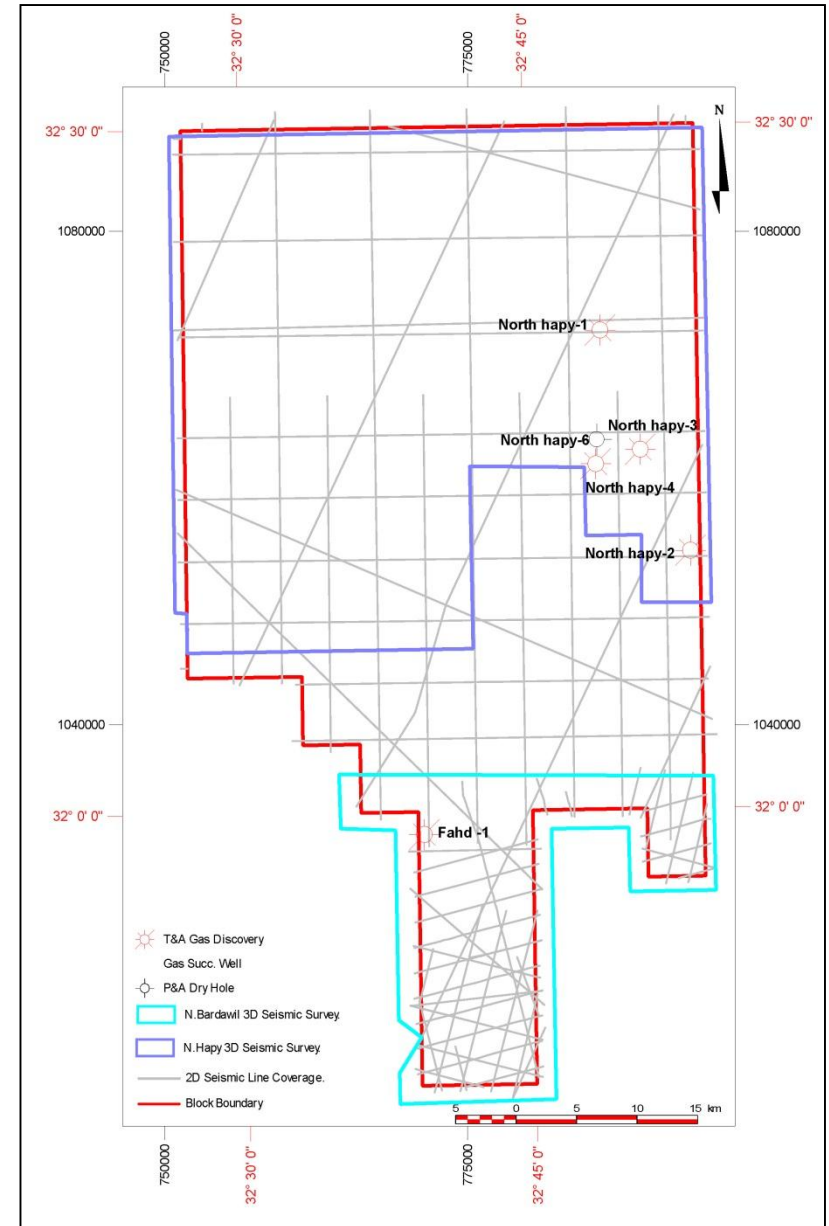
Ministry of Petroleum
and Mineral Resources

2D & 3D Seismic Coverage

Block 12; NE Hapy Offshore

2D Seismic Surveys (Segy Standard Format)		
Survey Name	Line-Km	No. of Seismic Lines
TGS	113	3
9606	111	11
9601	778	18
NS 94	21	3
NS	174	17
NDD	300	9
Broadseis	27	1
Total	1524	62

3D Seismic Data (Segy Standard Format)	
Survey Name	Area (Sq. Km)
N. Hapy	1649
N. Bardawil	451





Block 12: Prospectivity Examples

NE Hapy Offshore Block is traversed by minor faults formed by the interplay of the three major fault trends (Temsah Fault Trend, Rosetta Fault Trend & Hinge Zone Faults) affecting the Nile Delta Basin. These faults are anticipated to play an important role in shaping the prospectivity of the block. The block lies to the east of the BP's recent Oligocene gas-condensate discoveries of Salamat and Atoll.

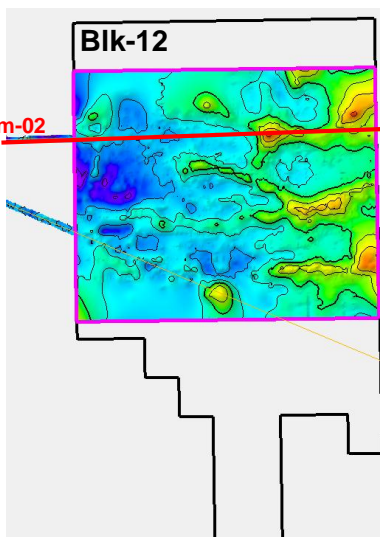
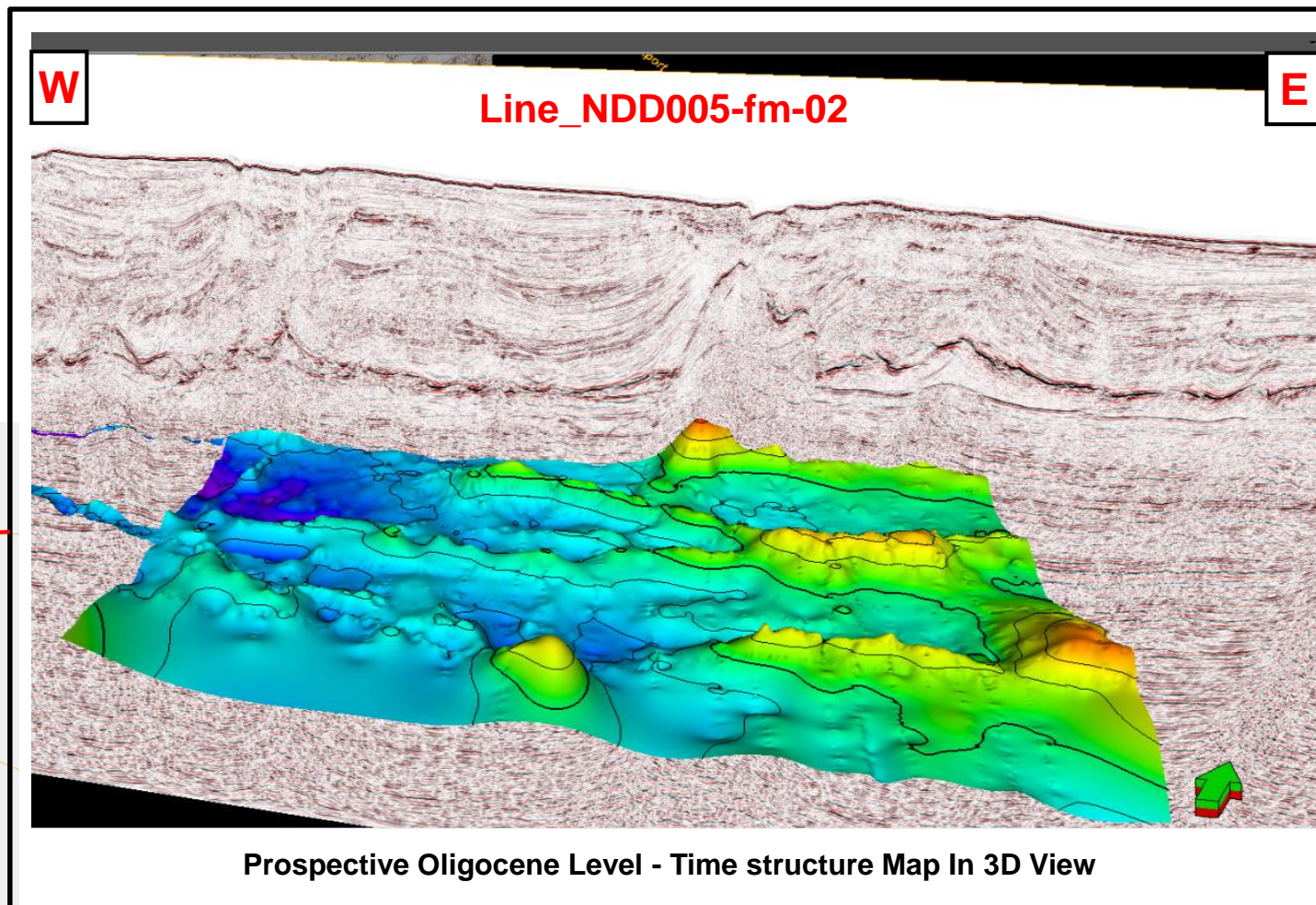
Oligocene Play Concept:

Source: Oligocene Clastics and the underlying Eocene Carbonate (Oil Prone and Oil/Gas Prone)

Reservoir: Sandstones of the Chattian and Ruplian

Seal: Top seal is provided by intra-formational shales.

Trapping: Anticlinal features with 4-way dip closure.



Line_NDD005-fm-02



EGAS



Ministry of Petroleum
and Mineral Resources

Block 12; NE Hapy Offshore

