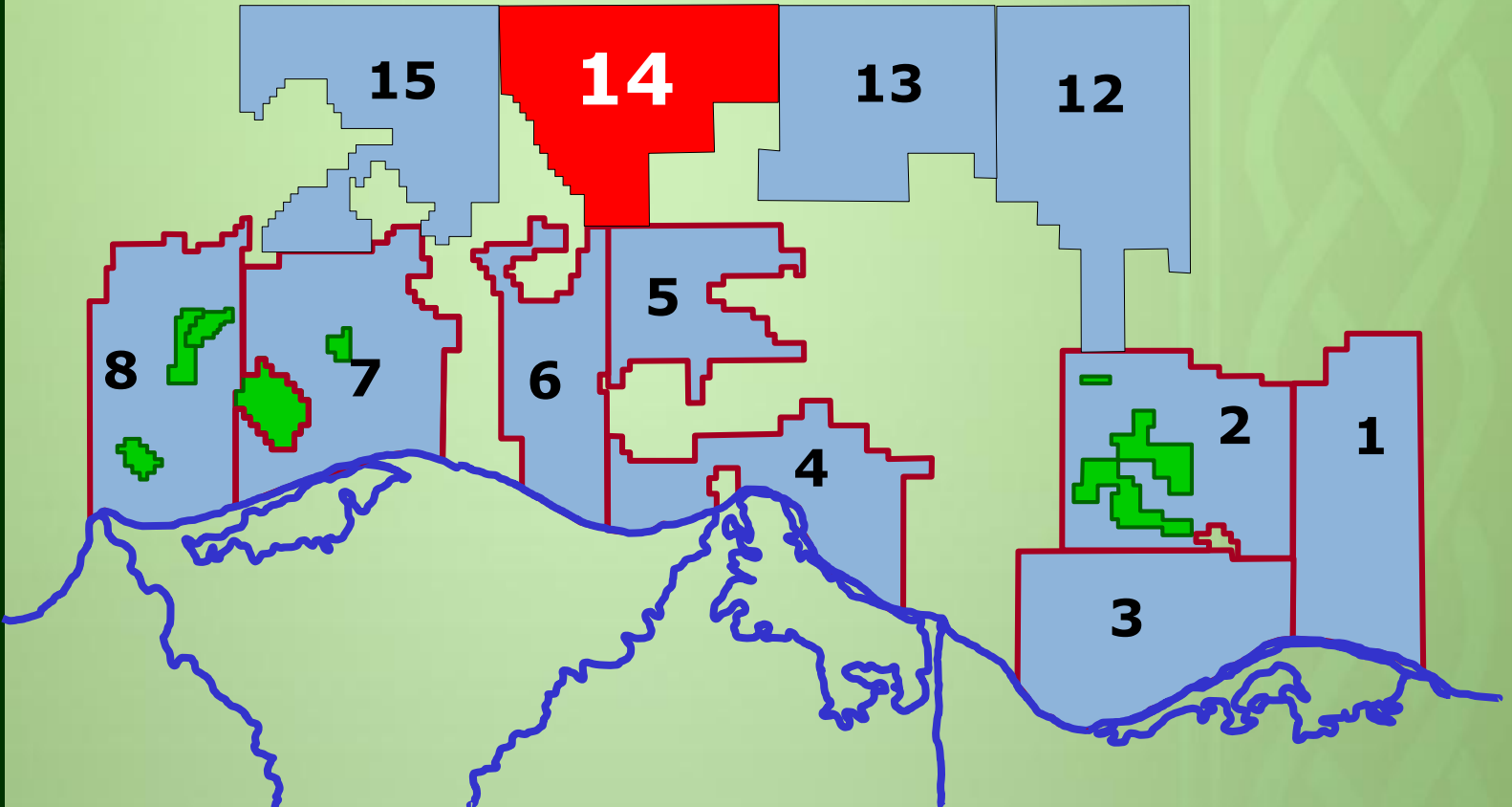




Block 14

North El Tabya Offshore



BID 2015



Block Summary

Location:

Block 14 is located offshore Mediterranean Sea, in water depths ranging between 200 m and 1300 m. It is situated at approximately 197 km to the ENE of Alexandria City and 134 km to the NNW of Port Said City. The southern boundary of the block is lies some 66 km to the north of the Mediterranean shoreline with its northern boundary extending northward for additional 51 km. The block is situated in an area with well-established infrastructure for gas-condensate production/transportation.

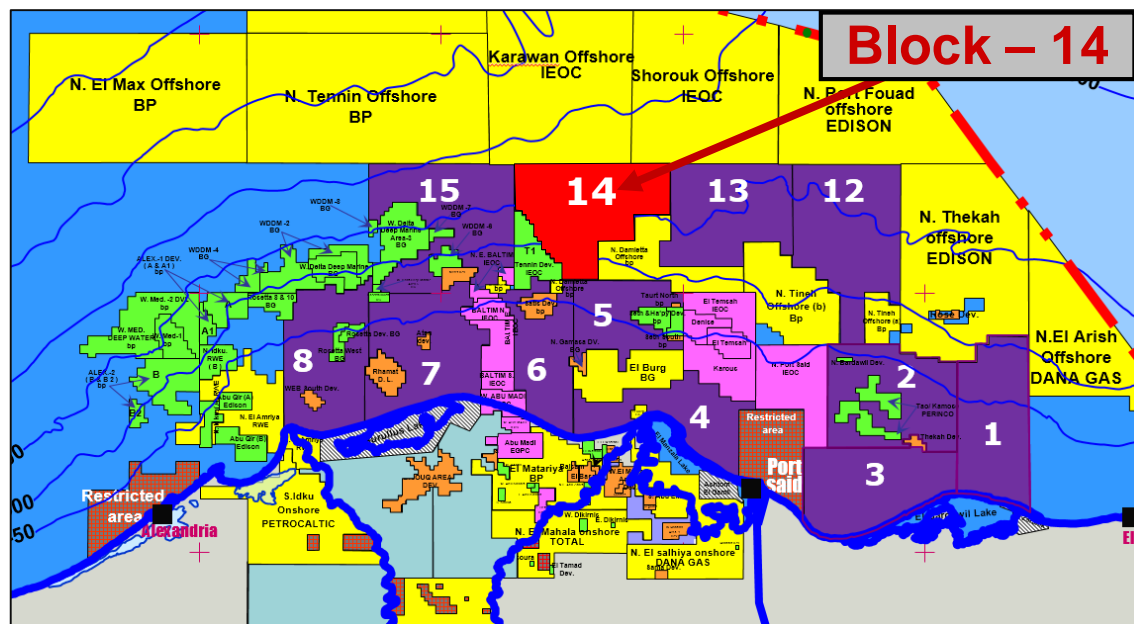
Total Area: 2084 Km²

Water Depth: 200 – 1300 m

Previous Concessionaire: Total, IEOC, GSPC & bp

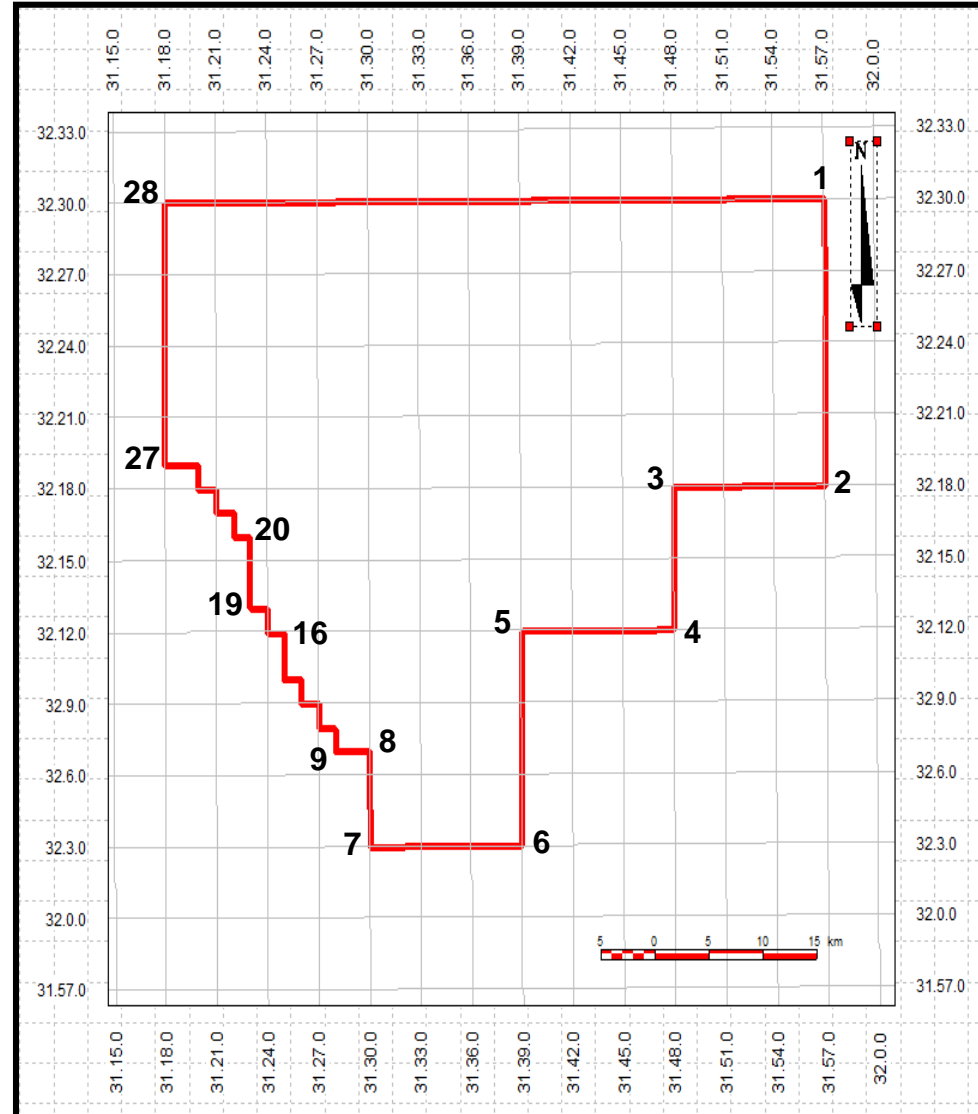
Nearby Fields & Discoveries:

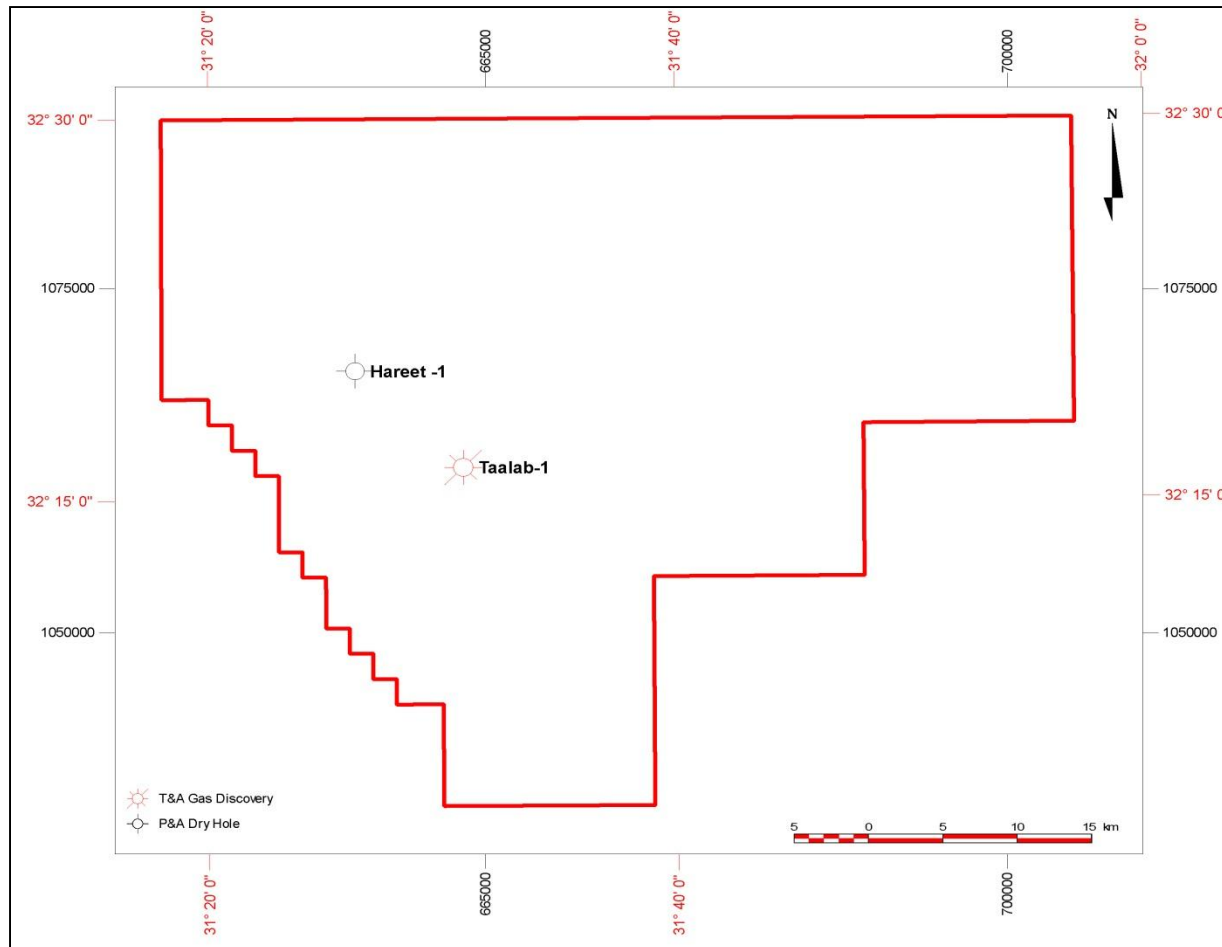
North El Tabya Offshore Block is bordered from the southwest by IEOC’s Tennin Development Lease.



Block (14)
North Tabya Offshore
Total area ~ 2084 km²

No.	Lat.	Long.	No.	Lat.	Long.
1	32° 30' 00"	31° 57' 00"	15	32° 10' 00"	31° 25' 00"
2	32° 18' 00"	31° 57' 00"	16	32° 12' 00"	31° 25' 00"
3	32° 18' 00"	31° 48' 00"	17	32° 12' 00"	31° 24' 00"
4	32° 12' 00"	31° 48' 00"	18	32° 13' 00"	31° 24' 00"
5	32° 12' 00"	31° 39' 00"	19	32° 13' 00"	31° 23' 00"
6	32° 03' 00"	31° 39' 00"	20	32° 16' 00"	31° 23' 00"
7	32° 03' 00"	31° 30' 00"	21	32° 16' 00"	31° 22' 00"
8	32° 07' 00"	31° 30' 00"	22	32° 17' 00"	31° 22' 00"
9	32° 07' 00"	31° 28' 00"	23	32° 17' 00"	31° 21' 00"
10	32° 08' 00"	31° 28' 00"	24	32° 18' 00"	31° 21' 00"
11	32° 08' 00"	31° 27' 00"	25	32° 18' 00"	31° 20' 00"
12	32° 09' 00"	31° 27' 00"	26	32° 19' 00"	31° 20' 00"
13	32° 09' 00"	31° 26' 00"	27	32° 19' 00"	31° 18' 00"
14	32° 10' 00"	31° 26' 00"	28	32° 30' 00"	31° 18' 00"





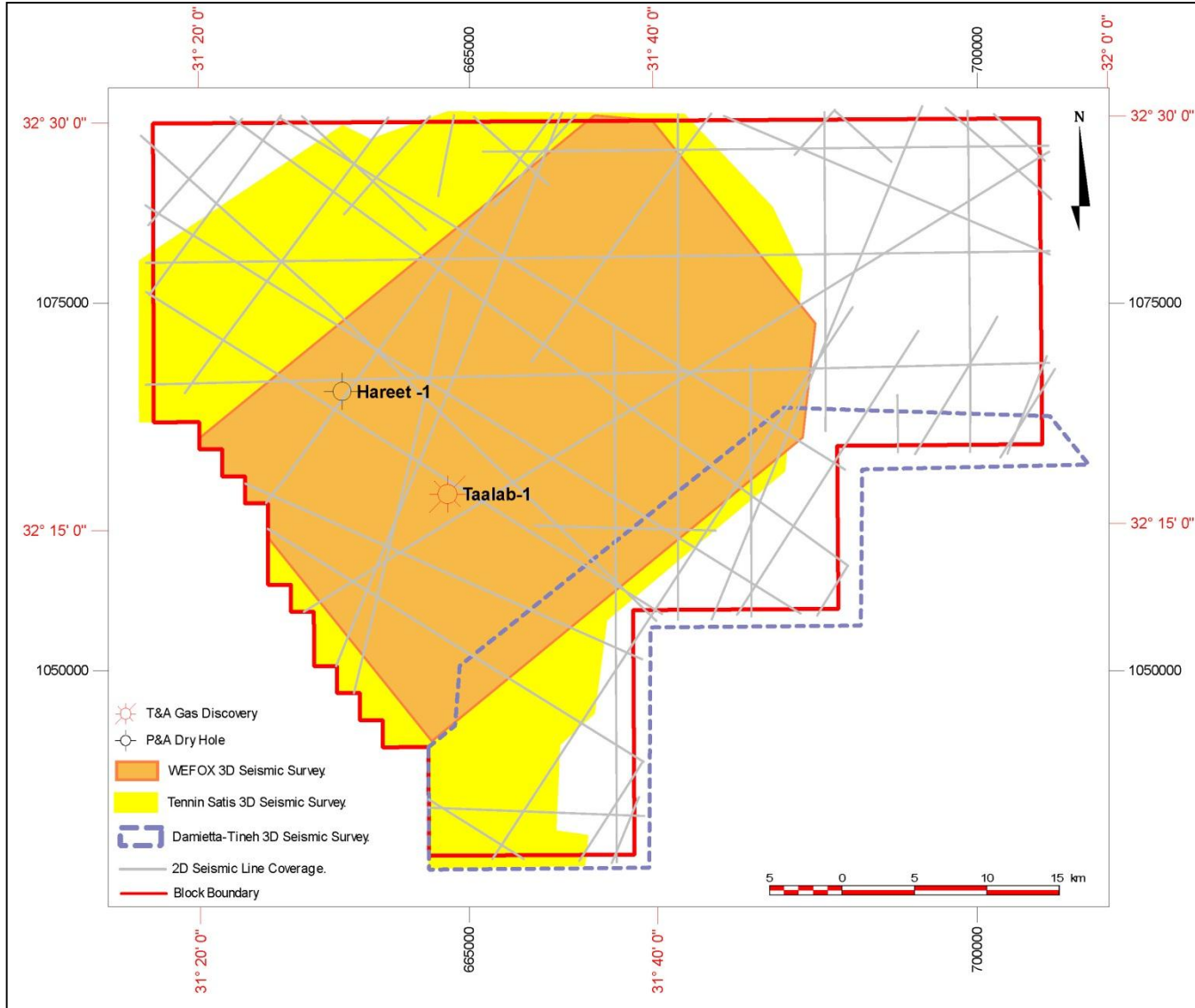
Well Name/ Company	Spud Date/ Compl. Date	TD/ FM. @ TD	Lat./ Long	Status
Hareet -1 IEOC	27-Apr-2000 8-Jun-2000	1877 M EL Wastani Pliocene	32 20 06.5 31 26 16.96	P&A Dry Hole
Taalab-1 IEOC	11-Jun-2000 29-Jun-2000	1327 M EL Wastani Pliocene	32 16 18.7 31 30 53.05	T&A Gas Discovery

2D Seismic Surveys (Segy Standard Format)

Survey Name	Line-Km	No. of Seismic Lines
TGS	52	1
9601	573	20
NDD	369	11
S99DW	60	8
GND93	50	5
Broadseis	6	1
9607	7	1
Total	1117	47

3D Seismic Data (Segy Standard Format)

Survey Name	Area (Sq. Km)
WEFOX	977
Damitta-Tineh	505
Tennin-Satis	1487





Block 14: Prospectivity Examples

North El Tabya Offshore Block straddles the northern end of the NW-SE trending Misfaq-Bardawil Fault (Temsah Fault). The central and southern parts of this fault host, to the east, numerous gas-condensate fields with mainly Miocene aged reservoirs. The majority of the block (i.e. central and eastern portions), lies in the same geological setting and is likely anticipated to encompass prospective features lying at the extension of the Temsah trend of gas-condensate fields. In addition, Block 14 also lies to the north and west of the recent Oligocene gas-condensate discoveries by BP (Salamat & Atoll discoveries).

Oligocene Play Concept:

Source: Oligocene Clastics and the underlying Eocene Carbonate (Oil Prone and Oil/Gas Prone)

Reservoir: Sandstones of the Chattian and Ruplian

Seal: Intra-formational shales of the Oligocene are anticipated to provide top and lateral seal.

Trapping: Anticlinal features with 4-way dip closure.

